

DOWNFORCE – Step Plates

INSTALLATION AND USER'S GUIDE

This manual is for installing the DF Step Plates. The purpose of the step plate is to protect the paint of the car from foot traffic. There are two versions of the step plates available from DF. The difference between the two versions is simply with the VIN Placard or without.

Installation typically requires a good 15 minutes with the VIN placards, and 5 minutes for the plain step plates.

After numerous attempts to find the best technique for removal, this is what DF found to be the most consistent method to remove your factory side sills without damaging the VIN Placards.

PART NAME	STEP PLATES
PART NUMBER	DF-AAA410 / DF-AAA411
VEHICLE	ACURA NSX 1991-2005

Tools



Mini Screwdriver
(flat head)



Plier



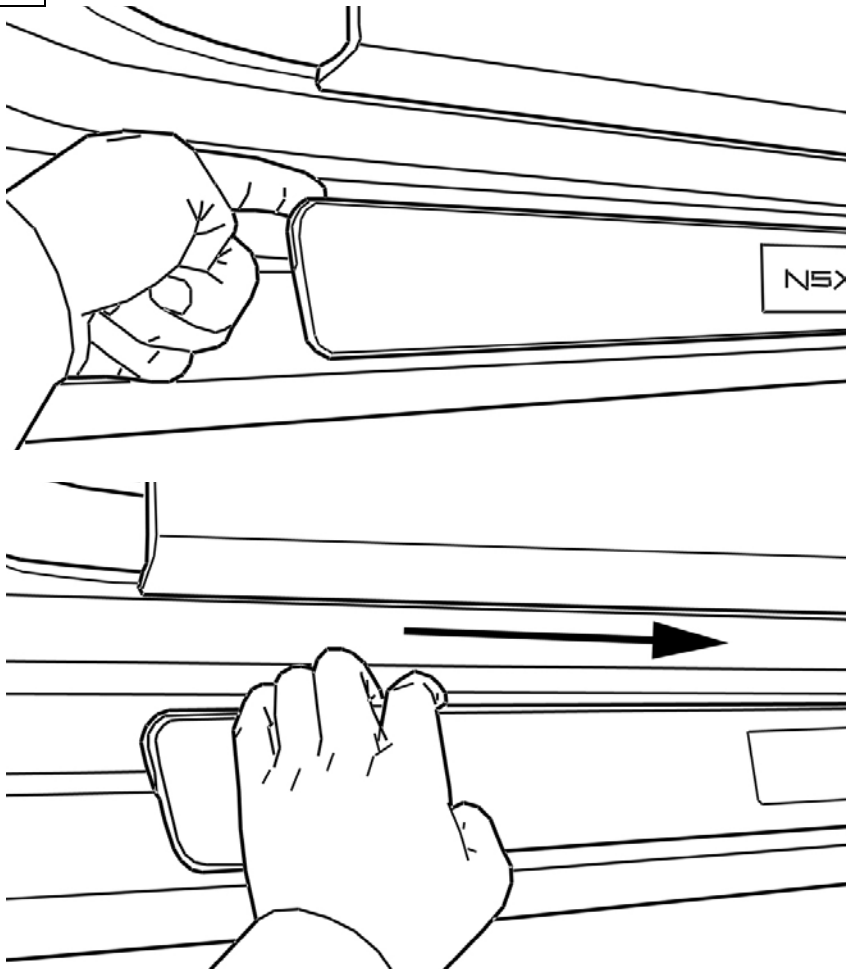
Diagonal Cutter



Screwdriver
(flat head)

1

Step Plate Removal



To remove the factory step plates, try to get grip underneath the plates. Use your hand only to prevent any damage to the paint.

Pry the rear edge of the factory step plates with one finger and slide your hand across the top of the side plate slowly. Moving across slowly will prevent any accidental cuts to your hand.

As your hand slides across the plate you will hear and feel the plastic tabs pop out of the metal retainer clips. If you feel any resistance, slightly pull the step plates upwards and it should snap out of the retainers.

Once the step plate is removed, make sure all of the retainers are still on the car. If any of the retainers are stuck on the step plate, use a plier to pull them out and reinstall onto the NSX.

For guidance on the VIN placard removal, please see a short video online available at:

<http://downforce.biz/manual/vinremoval-collet.avi>

<http://downforce.biz/manual/vinremoval-knob.avi>

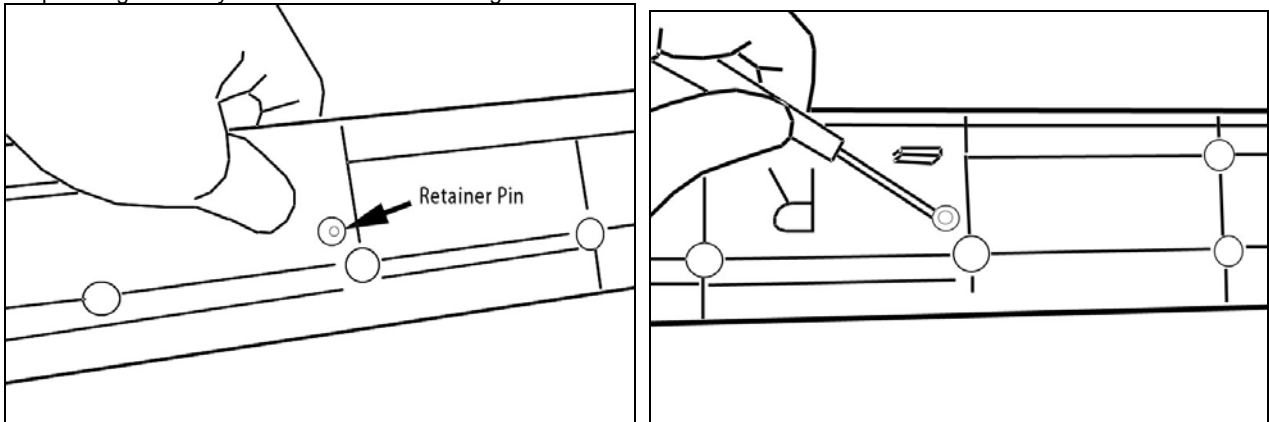
(optional: only if using double sided tape for install)

Step Plate Installation

Both step plates look nearly identical, the only way to differentiate between the two is to match the mounting tab position. DF recommend that you retain the factory collet pins as it is easier to remove for future use.

Removing the VIN Placard

Use a small flathead screwdriver to pry off the 2 collet/retainer from the underside of the step plate. Use your thumbs to squeeze the plate together so you can make room to wedge the flathead screwdriver inside.



Mounting the VIN Placard

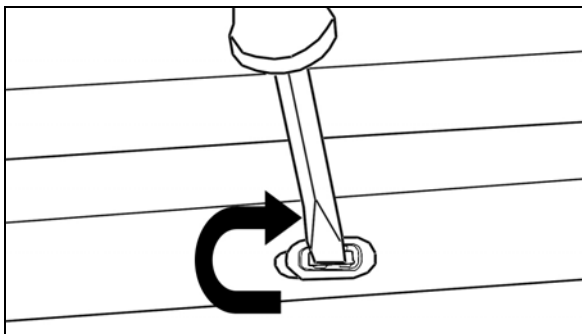
Using Double Sided Mounting Tape

Use a plier or a cutter to remove the two pins on the rear of the metal VIN Placard to break it off. Then use a double sided foam tape to mount the Placard onto the DF carbon step plate. There is a video available online for this simple step from just using one hand.

Using Factory Retainer Ring

You will need to drill 2 small holes for the factory pins. Then reuse the retainer ring to lock the VIN Placard in place.

Mounting the Side Sill Plate



Once the VIN Plate is mounting onto the DF Side Sills, you can directly mount onto the NSX just like the factory Side Sills.

Optional: You can use a double sided tape or DF's black sealant (optional) to keep the edges planted.

Troubleshooting: If the tabs on the DF step plates are too thick, use a flat head screw driver to enlarge the retainer clip on the NSX. Insert the screw driver inside and gently turn to pry open.

Note: The DF Side Sills uses thermoplastic tabs for flexibility and durability. Initially you will hear cracking if the tabs are bent, but it is normal as it will not break off.